



WHOLE HOUSE CUSTOMIZATION

Kitchen / Living / Bedroom / Bathroom

OPPEIN

OPPEIN HOME GROUP INC.

Add: #366, Guanghua 3rd Road, Baiyun District, Guangzhou, China
www.oppeinhome.com

+86-20-36730513

sales@oppein.com

[f](#) [in](#) [@](#) Oppein Home



OPPEIN Website



OPPEIN Wechat



360° Showroom

OPPEIN

The Largest Cabinetry Manufacturer in Asia

CONTENTS

Introduction

01 General Introduction

House Customization

02 Kitchen

18 Wardrobe

28 Bedroom

34 Living Room

36 Home Office & Reading Room

39 Mudroom & Hallway & Fireplace

42 Dining & Under Stairs Area

44 Bathroom & Laundry

52 Interior Door & Windows & Panneling

56 Whole House Solution

Home Furnishing

70 Sofas, chairs, bed, mattres...

Overseas Showrooms & Projects

72 Overseas Showrooms

75 Overseas Projects



About OPPEIN

Founded in 1994, OPPEIN is China's No.1 kitchen and customized home décor brand and Asia's largest cabinetry manufacturer. We manufacture high quality kitchens, wardrobes, customized home furniture, bathroom products, interior doors and home furnishing, and are able to offer whole-house solution for our customers.

Over the past 25 years, OPPEIN has established its core competencies in brand influences, mass customization and dynamic distribution system. We are forging informationization as the fourth edge.

Despite its leading role in the Chinese market, OPPEIN is exploring the international market through project and retail business. We are present in 118 countries and regions around the world.

We achieve this through our unceasing striving for perfection, and the passion to satisfy individual needs of home décor.

Our mission is to optimize your personal life; our vision is to make OPPEIN a modern, innovative company respected and loved by the people, held in the highest esteem in China, and emulated around the world.

We deliver what we promise, and will make no compromise to offer premium products and services to our customers.



Tianjin Factory, North China



Chengdu Factory, West South China



Wuxi Factory, East China



Qingyuan Factory, South China

FACTS & FIGURES

On the way of striving for perfection, OPPEIN has created many firsts and harvested impressive figures, making us one of the world's most trustworthy brands. We stand firmly with our partners and consumers, and are able to add more value to your projects in terms of superior design, high quality and professional services.

FACTS

- The first to introduce modern kitchen manufacturing to China
- The first drafting unit of China's Residential Kitchen Standard
- The first to be honored with "China Top Brand" in the industry
- The first to be honored with "China Well-Known Trademark" in the industry
- The first to be certified with "China Environmental Labelling" in the industry
- The first to initiate and offer whole-house customization solution in the industry
- The only one brand representing China's light industry chosen as one of the top 30 component stocks by MSCI (Morgan Stanley Capital International) index
- Ranking No.1 with a total brand value of 4,142,878 thousand US\$ in Dec, 2018 in the industry in China
- Ranking No.1 in sales volume consecutively for 17 years in the industry in China

FIGURES

- 5** manufacturing plants with a total of **2.3** million square meters allow us the largest production capacity in Asia.
- 6** product categories consist of kitchen, wardrobes, customized home furniture, bathroom products, interior doors, home furnishing, able to offer you **whole-house customization solution** in coordinated style efficiently.
- Offering customers with endless possibilities with **6** design styles, **9** door materials, **100+** door styles and **200+** colors.
- 25** years of project and retail experiences
- Exporting to **118** countries & regions
- 7,000+** showrooms worldwide
- fulfilling **10,000+** projects worldwide
- Sales turnover reaching **1,672,876** thousand US dollars in 2018



PLCC17060



MODERN

LAFITE // GLASS FRONTS

LAFITE features its combination of glass doors and one-piece stainless steel worktop, plus the aligned lines, representing a currently trendy minimalist style.

Transparent glass doors and the built-in ambient lights provide full visibility to storage and create moods. Wall units enlarge visual horizon and expand storage space, and open cabinets under wall units are ideal space for easily accessible articles.

Seamless one-piece stainless steel worktop is concise and represents state of the art craftsmanship.

Modern Kitchen Cabinets



Mulsanne



Saipan



Remington



PLCC18027



PLCC18005



Moma



PLCC17058



PLCC17071



OP16-117



PLCC17049



TRANSITIONAL

PASTA // PVC FRONTS

Characterized by its generosity and clarity, this elegant kitchen demonstrates its fine detailing, such as recessed door, glass fronts, echoing vertical and horizontal planning.

The transition from kitchen to living space is smooth, and it reflects a universal trend in architecture.

Transitional Kitchen Cabinets



PLCC17056



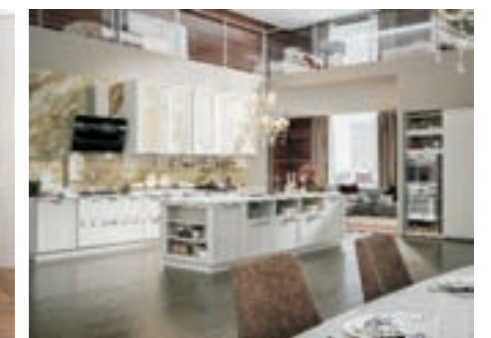
Philippe



PLCC18086



PLCC19028



PLCC17059



Harvest



A project in Russia



PLCC17059_VAR



OP17-PVC04



SHAKER MUSSEL

It represents simplicity, utility and honesty.

Blue fronts gives it trendy appeal. It can look well in country, classic and even temporary setting.

The silver knobs and cup pulls echo with the white shelf, allowing for a fresh flavor.

Shaker Kitchen Cabinets





OP16-120B



TRADITIONAL WINDSOR

Traditional style has a formal and elegant looks of American and European classical art and aesthetics. It generally features fine detailing, such as crowning molding, fluting, corbels and other ornamentation and decorative trims. Its door is always natural solid wood, for example, maple, cherry, birch, walnut, ash and alder. The door styles can be raised, recessed or arch pattern.

Traditional Kitchen Cabinets





▲ Modern Walk-in, Clean and Attractive

WARDROBE

Modern Walk-in, Clean and Attractive

Dark oak interplays with off-white color. Aligned pull-out shelves are tailored to offer adequate space for personal folded shirts. Two-level hanging rods allow more hanging space.



Transitional walk-in, warm and casual

A transitional bedroom is a mix of traditional and contemporary style. It is favored by people who pursue both splendor and simplicity in their bedroom.



Traditional walk-in, luxury and sensational

A traditional walk in gives a soothing personal sanctuary, and elevate the appeal of your living room interior.



Camino

Modern sliding doors, built in and neat looks

Sliding door wardrobes are often built-in, and they do not stick out when open, leaving you more space. Another benefit is, sliding doors hide all your storage and allow a more orderly looks.



Modern hinged doors, neat and calming

Modern hinged wardrobe easily delivers a sober look but also attracts enters' attention with its good design.

This lacquered wardrobe is minimalist. It features simple vertical lines and piano-key shape handles.

Modern Walk-ins



Eiffel

Transitional Walk-ins



Ferragamo



Princeton



New Charming



Carlton

Traditional Walk-ins



YG11213



YJ0351603



Modern Time



Duke



YG21436

Sliding Doors



Chloe

Hinged Doors



Eiffel



YP0511604



Wind



Mino



TM01506



Piaget



Russell



YJ0511601

BEDROOMS

Create a Comfortable Relaxing Bedroom

Custom Make Your Beds & Nightstands to Fit for Your Style and Size

Hard to find a proper standard bed, or want your bed to be more harmonious with the interior. We can custom make it.

Maximize Your Bedroom by Built-ins

Want to add a small reading or leisure area in your bedroom? Adding a window built-in or utilizing awkward space. Let us help you.

One-Stop Purchase Bedroom Furnishings

Tired of purchasing from one supplier to another?

Get all home furnishings from OPPEIN. For bedroom, we offer high-quality standard beds, couches, ergonomical mattresses and pillows, in different material and styles.



▲ A Modern Bedroom-Graceful and Lasting



Carlton



San Carlo

Transitional Bedroom-Mix Contemporary Lines With Traditional Features

A successful transitional design is achieved by seamlessly combining a mix of modern and traditional. Bedroom furniture plays a key in shaping this style.

Neutral Built-ins with Details

It is mainly in neutral colors, with raised doors and detailings, such as crown molding, but not as complicated as traditional one.

Upholstered Bed & Textile

It lends a sense of layering and help the room pop. The tactile appeal fits right in and brings sleek elegance to this style.

Bedroom Furnishings

They have crisp profiles and straightforward style . Gentle curves and rigid lines feed off each other to create energy.



A project in Nairobi, Kenya

Traditional bedroom, graceful and lasting

Traditional bedroom offers timeless elegance and beauty. Its material is often solid wood and wood veneer with dedicated detailings of classical European and American aesthetics, such as crown moldings and carvings.

Meanwhile, a perfectly engraved bedposts with stunning craftsmanship look extremely superb in your bedroom and bring a royal feeling.

BEDROOM GALLERY



Built Up A Place for Kid's Dreams

A kid room is more than just a place to sleep. It is a place to play, read, do schoolwork and daydream. Below elements will be taken into consideration when we customize a kid room.

- ◆ Use lively and bright colors to encourage interests
- ◆ Consider effective, ergonomical and safe storage solutions.
- ◆ Consider multiple siblings, ages, and varying style and tastes.



Milano



Noke



Lamia



Mole World



Milano



OP16-Villa02, a villa project in North America



A house project in North America



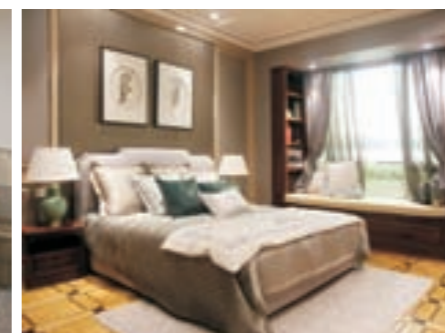
A villa project in Ghana



Earl



New charm

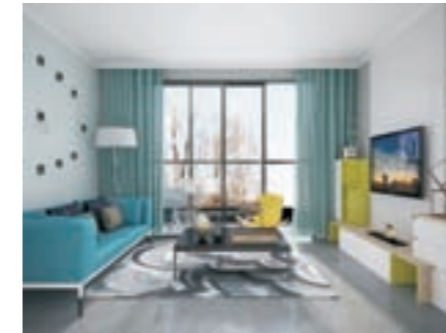


Davit



Preston

LIVING ROOM GALLERY



OP16-HS01, a project in Australian



OP16-Villa02, a villa project in North America



OP16-Villa02, a villa project in North America



OP16-Villa01, a project in Australian



OP16-HS0210, a project in Pakistan



OP15-HS9



New charming



Ferragamo



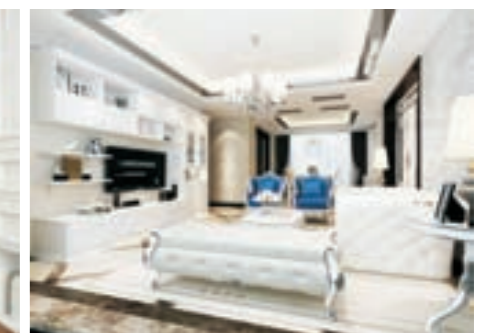
Paris Spring



Milano



Moore Garden



TV0481602

Decorate A Comfy and Welcoming Living Room

A Living room is used for family gathering and guests entertaining. It normally consists of couches, sofas, tables, chairs, sideboard, TV cabinets, storage cabinets and bookcases.

Customize Your Living Room Furniture to Reflect Your Personality

In order to achieve a living room that reflects your tastes, you can customize your living room with the help of our professional designers. Choosing standard furniture may be time-saving. However, standard furniture has its shortcomings in its rigid looks and poor space utilization.

One-Stop Choose Your Living Room furnishings to Get A Harmonious Look

Do not forget to choose our high-quality home furnishings, which perfectly coordinate with our custom-made furniture, in different styles and at an affordable price.

Customize a spiritual retreat for thinkers

Home office should be a refreshing and inspiring space to work in. It should be organized in a way to fit your personality and provide a calming atmosphere. Here we have some ideas for your home office style that you may get some inspirations.



Milano



Euro-style



OP16-Villa01, a project in Australia



OP16-Villa02, a project in North America



OP16-HS0210, a project in Pakistan



OP16-HS03



SG0491622



Milano

Grow up and knowledgeably with time

If space is enough, a separate reading room with bookshelves and desk is welcome. Even if you have a narrow space, nook can also be well designed to be a comfortable reading room.

Corner or window space is a good place to make a built-in reading place.



OP16-Villa03, a project in Ghana



Paris Spring



Say no to messes and hastes

As the primary entrance of home, mudroom is a useful addition as it helps to keep the house clean. A built-in mudroom has ample hooks and racks for damp and wet clothing, as well as racks or cubbies for shoes. In addition, a bench allow people to sit on while they remove their shoes is necessary. More importantly, custom cabinets are indispensable for family handy storage.



Moore Garden



Ferragamo



Milano



Ferragamo



Milano

An empty hallway is dull and a waste. Actually, there are many creative built-in ideas for hallway space. Such as built-in bench, shelves, cabinets. The built-ins not only adorn hallways, but also bring functions.

Add extra and easily-accessible storage

The design of hallways, corridors and entryways sometimes requires even more effort than designing living rooms.



Moore Garden



XG21421



XG61444



OP16-Villa01



Oppein_P2012-0312-053116

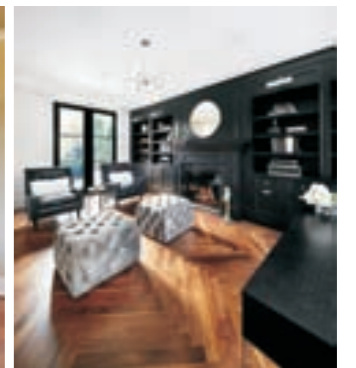


CG11119A



Design your fireplaces functionally and harmoniously

Depending on the overall interior style, fireplace enclosures can be complicated, less complicated or minimalism. They can be accented properly by crown moldings, decorative posts, carvings and other decorative elements, bringing traditional or transitional implication. Beside the fireplace, customized storage cabinets, hutches or shelvings can store your articles with easy access while you sit on sofas.





Customize a dinning area

Banquettes not only provide seating to a kitchen, but they can also make full use of your kitchen nooks and creates a relaxing dinning area.

Generally banquettes are near windows, which allow enough vision and brightness. Herein we gather a collection of the most popular styles to give you how a banquette can add extra seating space, storage, and style to your space.



OP-D01



New Charming



Moore Garden



OP16-HS02



OP16-Villa01



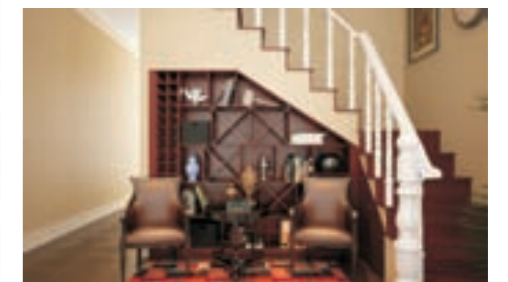
OP15-Villa01



Stairs home office

Make full use of the awkward space

There are many creative ways to make use of space under the stairs. We can design drawers, cabinet, closets, shelving, wine racks, or even desk and seating benches to fit under stairs.



Milano



Under Stair Pull Out

MODERN



PLWY19063



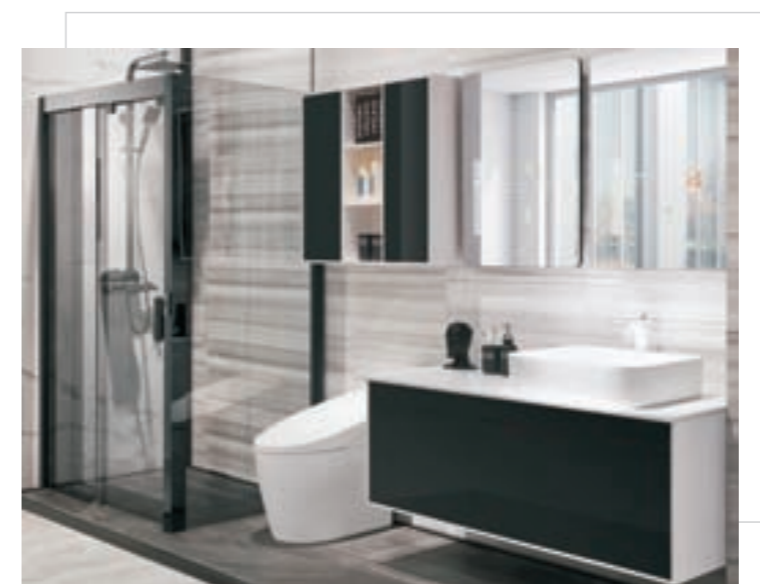
Golden Time

BATHROOM

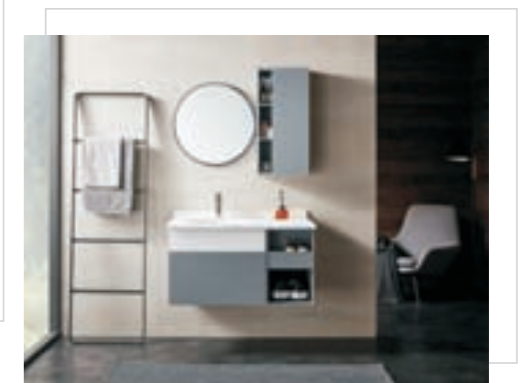
Bathroom should be a personal retreat, a blend of practicality and aesthetics that suits your needs. We have three styles of bathroom. All of them have distinctive differences in colors, fixtures and fine details.

Traditional style, comprising of natural colors, is elegant and provides warmth and grace. You may feel outdated in it.

Contemporary style is minimalist. It is clean, sleek and uncluttered. White and black are the most commonly colors. Transitional style is a balance between both and more compatible to different ages.



Camino



PCWY19001

TRANSITIONAL



Ferragamo

TRADITIONAL



Baroque Impression



North America Time



Savoy



OP16-Villa07

BATHROOM GALLERY



PLWY19064

Thyracont

Zag



Gray Pine

OP17-029

Modern Ca



Left Bank

PLWY19072A

PCWY19001



PCWY19004

PCWY19003

PLWY19043

BATHROOM GALLERY

Shower Room

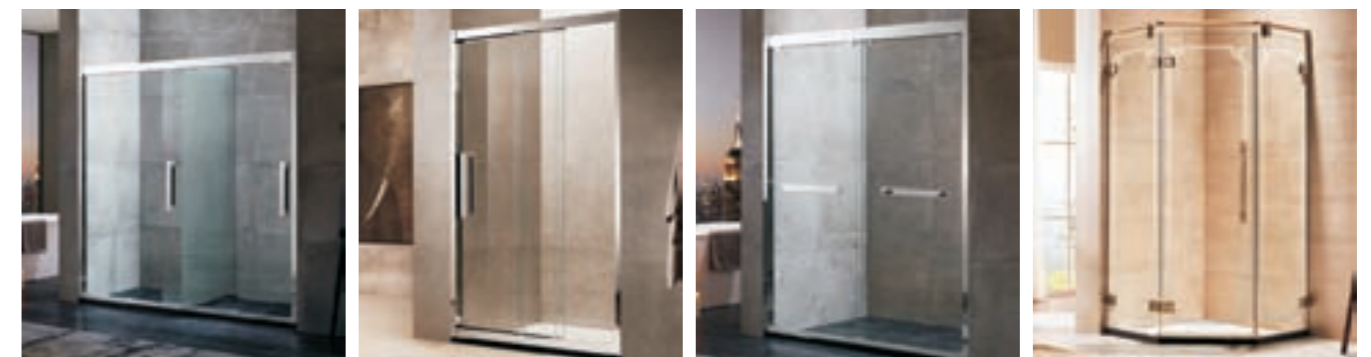


OPGC02-S008

OPGC02-D001

OPGC02-L017

OP18-D31RA



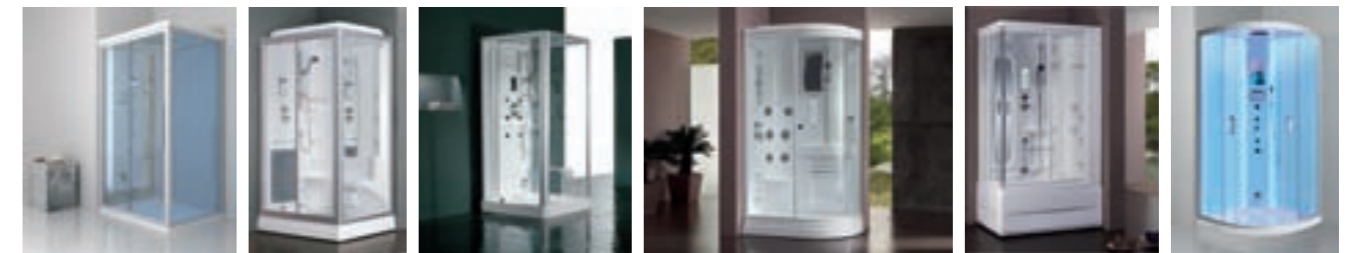
OP54-F42AA

Randy

Louis

OP85-D31LA

Steam Room



OP-W3020

OP-W3021

OP-W3008

OP-W4003

OP-W4006

OP-W3019

Toilet



OP-W7060R

OP-W7061R

OP-W7077

OP-W7065

OP-W7042

OP-W7083

OP-W7091R

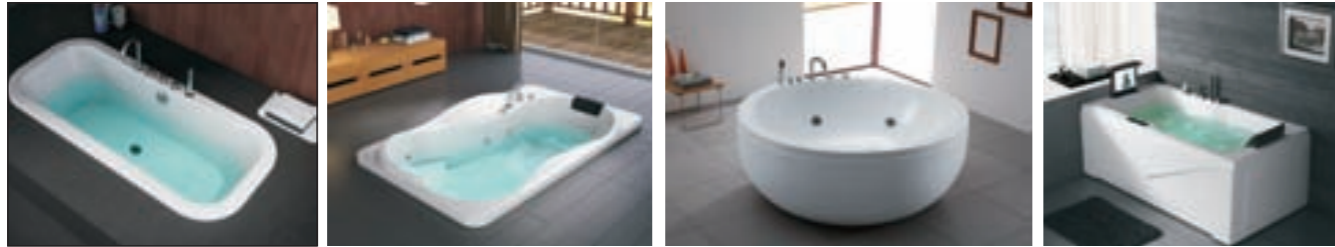
OP-W7095R

OP-W7066

OP-W7043

BATHROOM GALLERY

Bathtub

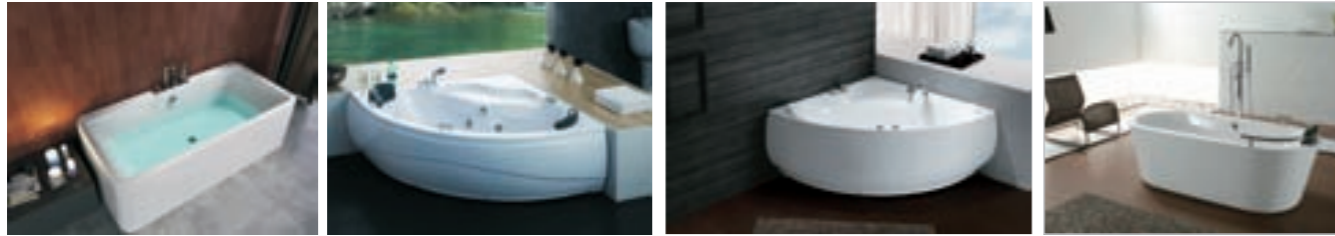


OP-W5923

OP-W5915

OP-W5077

OP-W5916



OP-W5612

OP-W5072

OP-W5071

OP-W5326

Shower Heads



OP-F9039-A

OP-F9017-AX

OP-F9019-A

OP-F9022-A

OP-F9023-A

OP-F9026-A

Faucets



OP-F1008

OP-F199

OP-F1014

OP-F1023

OP-F1023

OP-F1020

OP-F1021

OP-F1026-A

OP-F148

OP-F1014-A



Paris Spring

Improve washing and drying efficiency

Custom cabinets can be built to house your washer, dryer, baskets, hampers and ironing board. It give us a clean place to store our detergents and cleaning supplies. Also, you will have enough room to organize your clothes.



WOODEN
DOOR



MODERN

Wooden Doors

Doors shall be integrated with your overall interior style and enhance the beauty of your surroundings. We have a lot of door patterns to select from, and door material ranges from solid wood, lacquer, PVC, melamine or unfinished surface. Meanwhile, we offer different door core choices, including solid wood, tubular core, MDF and particle board blocks.

WOODEN
DOOR



TRANSITIONAL



CLASSICAL

WOODEN DOORS GALLERY

WALL PANELLINGS



YDF007D YDG002D YDG028D YDG044D YDK003D YDL001D YDJ007D



YDN001D YDE005D YDC005D YDJ004D YDC008D YDE027D YDE015D



YDE018S YDE003D YDE013S YDE007Z



YDG003D YDG063D YGD040D YDK004D YDE50D YDC006D



TV Background 1



TV Background 2



TV Background 3



Sofa Background 1



Sofa Background 2



Bed Background 1



Bed Background 2



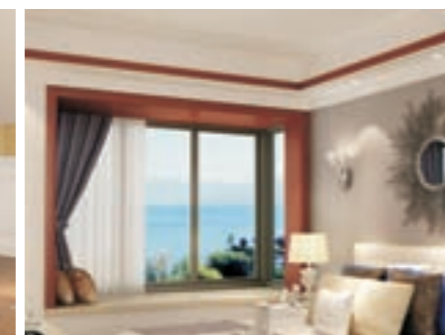
Hallway Background 1



Hallway Background 2



Stairs Background



Window Panels 1



Window Panels 2

Modern Style

Sleek & orderly, Comfortable & Welcoming

► Introduction

This modern second-floor house is one of projects we did in Perth, Australia, totally covering 382 square meters. Modern interiors are comfortable and welcoming without being cluttered and dark. It's a style that is equally appropriate for offices and stores, lofts and homes.

► Shapes

Simple, even minimal, such as clean lines, handleless flat door panels for kitchen & vanities, flat sliding-door for wardrobes.

► Colors

White, black and neutrals are the main colors in modern style interiors. The palette is often punched up and accented with bright and bold color. Black is often used to ground and define a modern style room. Walls are often painted in a basic neutral.

► Furniture

smooth, clean, geometric shapes are essential for contemporary style furniture pieces. Upholstered furniture often wears black, white, or other neutral tones in textured natural fibers. Cover it in a neutral, black, or bold fabric. Furniture pieces should be simple and uncluttered, without curves or decoration. Sofas, chairs, and ottomans have exposed legs. Beds and chairs usually have no skirt, trim, fringe, or tassels.



The first floor

Project Code: MO-1

Size: 382 square meters

Details: one kitchen, one living room, one dining room, five bedrooms, three bathrooms, one family room, one home office, one laundry room, one garage, one entertainment room, one walk-in



Kitchen



Guest room



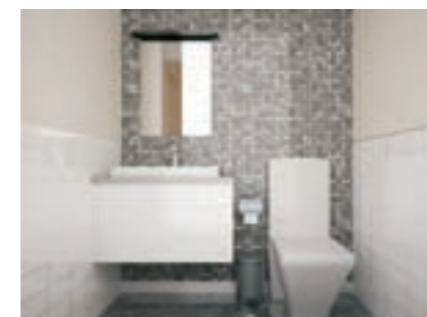
Living room



Home office



Entertainment room



Bathroom



Laundry



Garage



The second floor

This is a villa with two floors. White is the major color of this villa. White furniture can make your home bright and roomy. Stay in white world, you will feel easeful.



Project Code: MO-2

Size: 110 square meters
Details: one kitchen, one living room, one bedroom, one bathroom, one home office, one entertainment room.



Master room



Bedroom 1



Walk-in Closet



Bedroom 2



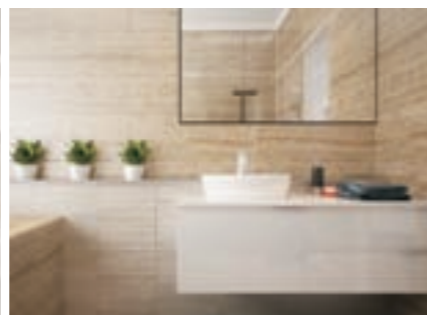
Bedroom 3



Retiring room



Bathroom 1



Bathroom 2

Walk-in Closet



Bedroom



Project Code: T-2

Size: 235 square meters

Details: one kitchen, one living room,
four bedrooms, five bathrooms, one
home office



Kitchen



Living room & Wardrobe & Home office



Bedroom & Bathroom



Bedroom



Living room



Entertainment room



Entertainment room



Home office



Dining room

Transitional Style

An Elegant Marriage of Modern & Traditional

► Introduction

Located in the Kalorama neighborhood of Washington D.C, this renowned mansion covers 8,200 square foot(762m²) With the layout, our designer remodels and visualizes it with a distinctive transitional style. If you enjoys aspects of modern and traditional styles, then you will love transitional style, because it takes the best from both styles.

► Colors

The color palette consists of light colors such as white, blue and accented by a dash of colors from furnishings

► Floors

Apply dark natural hardwood floor as balance and brings warmth

► Furniture

Can be all timber, rough iron pieces can be worked in as well. Pieces that look old and used suit well. Furniture lines are simple yet sophisticated, featuring either straight lines or rounded profiles.

Project Code: T-1

The first floor



Kitchen



Dining room



Living room



Hall

The second floor



Master room 1



Kids room 1



Kids room 2



Master room 2



Bathroom

Basement



Family room



Family room



Laundry



Pets room



Pets room

Traditional Style

Reminiscent & Timeless

► Introduction

If you are conservative, you will probably be most comfortable in a traditional style.

► Wood

Rich tones is the key element in traditional interior design. Dark woods like cherry, maple, and mahogany are typically used in furniture pieces of this style. These are often carved and lacquered to give them a luxurious, elegant feel.

► Colors

Walls are typically painted neutral colors to visually ground the elaborate furnishings. Most furniture in this type of room incorporates rich shades of colors like red, blue, and brown. Artwork and accessories often incorporate more vibrant colors in a traditionally designed room.

► Floors

Wood floors are also considered a standard for this decor, although tile and carpet are often used as well.

► Accents

Architectural embellishments are widely used in this type of interior design. These can include elaborate moldings, beveled wood paneling, intricate tile, arches and columns.

Project Code: TR-1



Bedroom



Bedroom



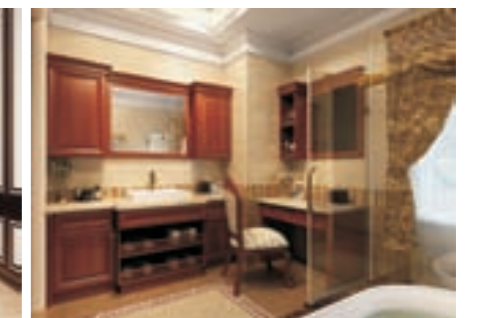
Living room



Stairs built-in



Hallway



Bathroom

Classical Style

► Introduction

Classical means it never goes out of time even if time goes by, so it could be a symbol of your home.

► Colors

Walls are typically neutral colors to visually ground the elaborate furnishings, while such colors may also be used for large upholstered pieces. Most furniture of this style incorporates rich shades of colors such as brown, red. So the color could be bright or dark tones.

► Furniture

Classical style means it could last, maybe, forever. The furnishing offers timeless elegance and beauty. Its material is often solid wood and wood veneer with dedicated detailing of classical aesthetics, such as crown moldings and carvings.

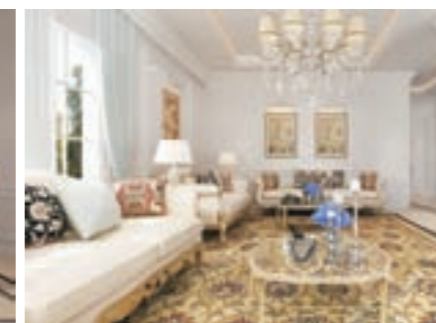
► Accents

Architectural embellishments are widely used in this style of interior design. This can include elaborate moldings, beveled wood paneling and intricate tile and wood floor patterns. Arches, columns and built-in cabinetry are also frequent features of this type of design.

Project Code: CL-1



Dining room



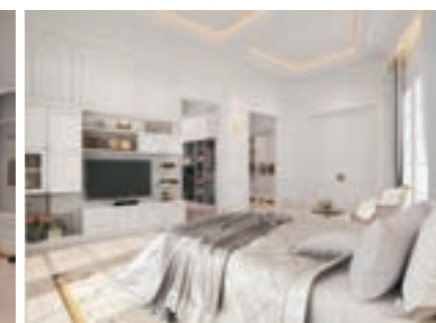
Living room



Living room



Wardrobe



Bedroom



Bathroom

Industrial Style

► Introduction

A subset of traditional style, and it's comfortable and simple. With its raw, utilitarian appeal, industrial style gives modern homes a sophisticated edge

► Colors

An industrial color scheme, you probably envision grey, grey and grey, with a little black and white thrown in for kicks. And while it's true that the range of colors in this style tends to be narrower than in others. The earth tones and neutrals are popular color choices

► Wood

The dark wood goes well with this style. The wood should be solid thick and not that bright, like brown, black, grey and white, and these colors create a post-industrial atmosphere, besides we often see wood and metal incorporated into the same industrial piece.

► Furniture

Industrial design involves the use of metal and wood. It is precisely these materials that combine to create a large number of industrial-style furnishings. Many are truly vintage, while others are inspired by old factory and laboratory pieces.

Project Code: IN-1



Dining room



Living room



Living room



Home office



Bedroom



Bathroom



OS-0116106-1



OS-0217024



OY-55-15035



OS-0116101



OS-0118010-1



OS-0218001-2



OC-0318007-1/2



OS-0318007-1-3



OP-017-P02



OP-661B-P01



OP-669B-P04



OP-0318017-1.8



OP-0318016-2-1.5



OB-0318008-1.8-016



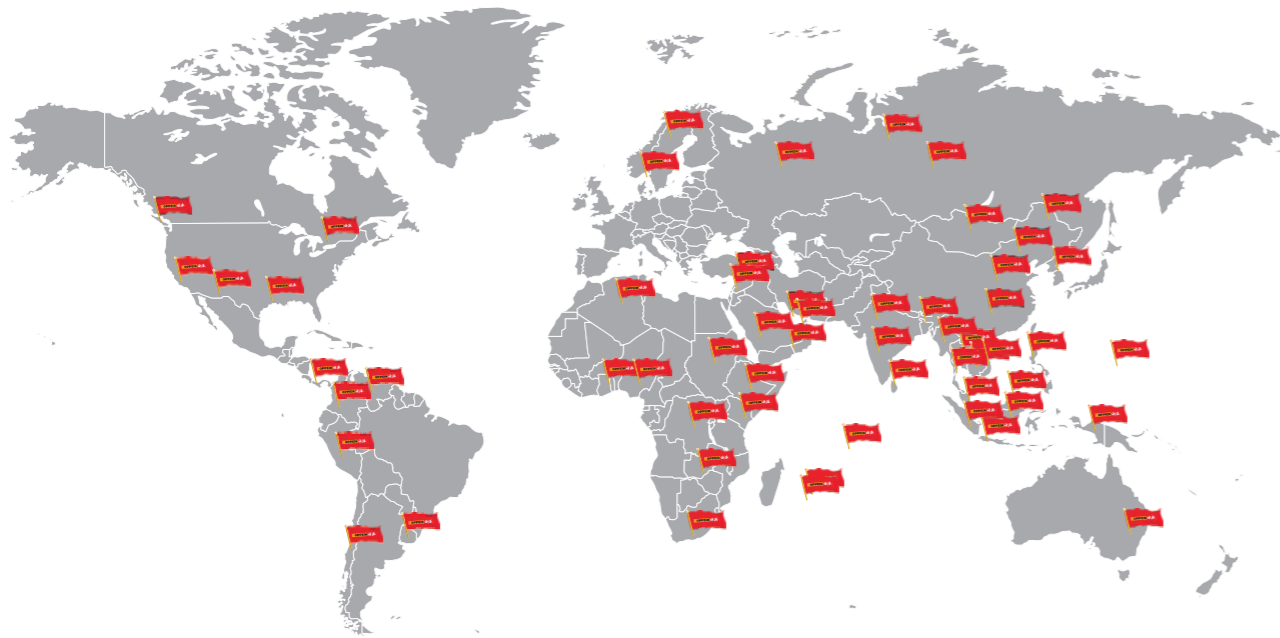
OB-0318010-1.8



OB-0317016-1.5

OVERSEAS SHOWROOMS

By the end of July, 2019, OPPEIN has more than 7,000 showrooms worldwide, which includes over 100 overseas showrooms situated in North America, Australia, Southeast Asia, West Asia, Russia and the Middle East.



7,000+ global showrooms



Calgary, Canada



Montevideo, Uruguay



Kota Kinabalu, Malaysia



Reunion, France



EPK showroom, Pakistan



SUPPORTING OVERSEAS FRANCHISEES

We welcome qualified design studios, furniture merchants, building material practitioners to be part of us to explore the local markets. Our two decades of channel experiences and know-how, ever-increasing international brand awareness, competitive pricing and permanent supports can ensure you a fast and efficient return on your investment:

Showroom Opening

- ◆ Investment analysis & business plan
- ◆ Showroom design & launch plan
- ◆ Sample allowance
- ◆ Training program

Training

- ◆ Sales
- ◆ Design & design software
- ◆ Installation
- ◆ Showroom operation

Sales & Marketing







- ◆ Annual sales bonus & advertising allowance
- ◆ Brand campaigns & promotion
- ◆ Business performance optimization
- ◆ Regular visits and experience sharing



OVERSEAS PROJECTS

Over the past 25 years, OPPEIN has been working with builders, architects, developers and contractors and has fulfilled more than 10,000 projects of all sizes worldwide, including some landmark buildings, such as Australia 108 Tower, the highest residential skyscraper in the Southern Hemisphere.



- 
3D Home Design
- 
KD Max Design
- 
Video Courses
- 
Building Websites
- 
Sales Scripts Knit
- 
"10+1" Showroom Management System

PROJECT SUPPORTS

From initial planning to excellent jobsite management and dedicated services, OPPEIN offers support as much as possible to real estate customers:

- ◆ Budget control
- ◆ Jobsite measurement, design, planning & visualization
- ◆ Quality control
- ◆ Logistics & coordination
- ◆ Qualified installation
- ◆ 5 years warranty
- ◆ One-on-one contact

With our professional project team, you can be sure that OPPEIN will be an invaluable part of your development and provide unparalleled support for a successful project.



Residential Project-USA



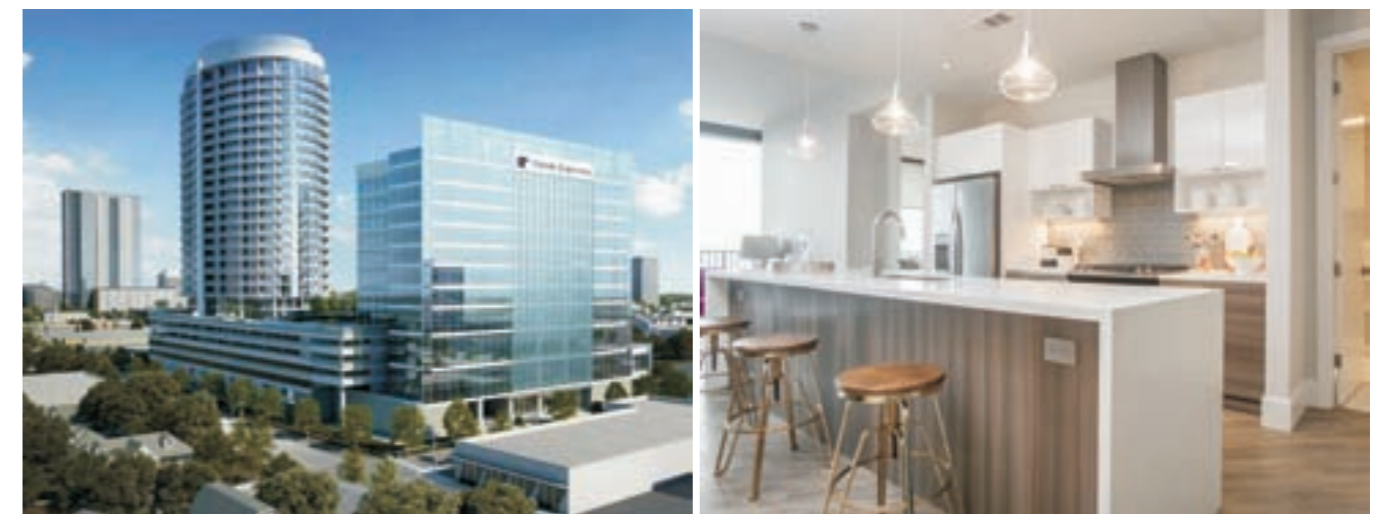
Project Name: 1035 Van Buren City: Chicago,IL Solution: kitchen, vanity Qty: 300 units

Residential Project-USA



Project Name: Hesby Apartment City: Los Angeles Solution: kitchen, vanity Qty: 308 units

Residential Project-USA



Project Name: Kirby Collection Tower City: Houston,TX Solution: kitchen, vanity Qty:199 units



Residential Project-Australia



Project Name: 108 Tower City: Melbourne Solution: kitchen, wardrobe, vanity, laundry Qty: 1,100 units

Residential Project-Australia



Project Name: The Parque City: Melbourne Solution: kitchen, vanity, laundry Qty: 329 units

Hotel Project-India



Project Name: Grand Hyatt Hotel City: Delhi Solution: kitchen Qty: 120 units

please visit www.oppeinhome.com for more project cases and details.

Residential Project-India



Project Name: New Cuffe Parade City: Mumbai Solution: kitchen Qty: 820 units

Residential Project-Ethiopia



Project Name: NOAH REAL ESTATE PLC City: Addis Ababa Solution: kitchen, closet, bathroom Qty: 224 units

Residential Project-Pakistan



Project Name: Bahria Town Karachi City: Karachi Solution: kitchen, wardrobe Qty: 770 units

please visit www.oppeinhome.com for more project cases and details.

Residential Project-Myanmar



Project Name: GEMS City: Yangon Solution: kitchen Qty: 584 units

Residential Project-Thailand



Project Name: CIRCLE REIN-1 City: Soi Sukhumvit 12 (Soi Suk Jai), BKK Solution: kitchen Qty: 120 units

Residential Project-Cambodia



Project Name: KJKS APARTMENT City: Phnom Penh Solution: kitchen, wardrobes, TV cabinet Qty: 93 units

please visit www.oppeinhome.com for more project cases and details.

Residential Project-Indonesia



Project Name: AMEGA CROWN RESIDENCE City: Surabaya Solution: kitchen, wardrobe, customized home furniture Qty: 1,000 units

Residential Project-Dubai



Project Name: Arjan & Majan Solution: kitchen, wardrobe, vanity, wooden door Qty: 796 units

Residential Project-Philippines



Project Name: AVIDA SOLA City: Metro Manila Solution: kitchen Qty: 1,008 units

please visit www.oppeinhome.com for more project cases and details.

Residential Project-Jamaica



Project Name: Soleil Residences City: Montego Bay Solution: kitchen, closet Qty: 330 units

Residential Project-Tunisia



Project Name: Dorrat Elmanzah 9C City: Tunis Solution: kitchen Qty: 176 units

Residential Project-Sri Lanka



Project Name: COLOMBO CITY CENTRE Solution: kitchen, wardrobe, vanity Qty: 1,100 units